

## General explanation :

Focus Inc. Galaxy-Jet X led uv flatbed printer with newest digital inkjet printing technology offers users direct-printing capabilities onto a virtually limitless choice of three-dimensional media. In addition to supplying technology for product customization, We offers a range of small and large uv printer devices. These are machines for customizing and creating unique graphics products. Capitalising on its peerless heritage in compact UV LED direct- to-object print technology, the plus reaffirms Focus market dominance in this rapidly developing sector. Geared to on-demand printing of the very highest quality at industrial production levels of output, focus Galaxy-Jet X uv flatbed printer utilises state-of-the-art technology to deliver a powerful and reliable digital alternative to traditional screen print operations.



Online video demo:



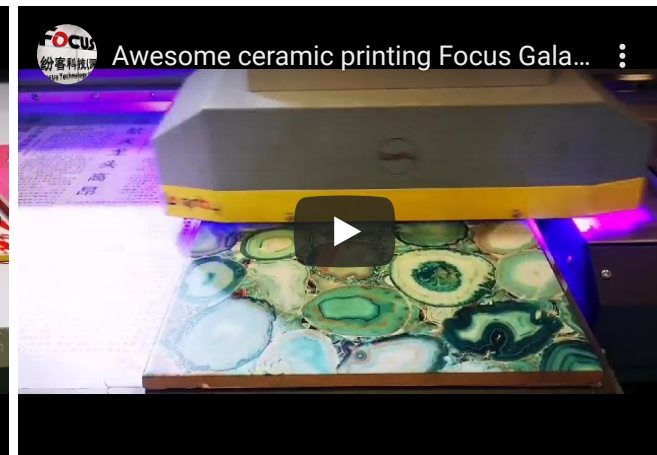
Spot varnish flatbed uv printing



White color one pass rotary printing



Printing on puzzle in Fespa Euroasia expo



Print with white, color, varnish one pass printing

[More video...](#)

Product Specification

FOCUS INKJET GALAXY-JET X 6090 UV PRINTER	
Print Technology: Micro Piezo Inkjet	Print Head: DX10/DX11/DX5/DX7
Head Channel: 18 channels	Head number: 3-head, White+Color+Varnish
UV system: 100-Degree adjustable	Cooling system: Water cooling
Temperature adjust: Auto on/off. 25-35°C	UV wavelength: 395-405nm

Head protection: Intelligent anti-scratch	Print speed: 180s/A2 size(720*720dpi)
Print model: Unidirection/Bidirection	Print resolution: 720*720dpi-720*3080dpi
Print type: One pass/Single/Copies	White layer: Bottom/Top/Middle
Rip software: FocusRIPV9.07/Wasatch/Ripprint	Image type: Tiff, Jpeg, Png, Psd
Repeat precision: 0.1mm	Head cleaning: Auto flushing+Keep wet
Max. print size: 60*90cm	Print media: Hard/Flexible/Bottle
Media thickness adjust: Software auto detection	Max. print thickness: 13cm
Ink type: UV ink	Ink system: Refill ciss system
Ink process system: Auto shaking + circulation	Ink level: Auto detection+Auto alarm
Color model: 8-color(CMYK+LC+LM+White+Varnish)	Tank volume: 550ml refillable
Color Rendition: ICC profile+Curve	Position type: Laser marking
Print table: Vacuum adsorption	Table treatment: Teflon coating
Print model: 3D. Wave. Rand. Eclasion	Motion config: Servo motor
Control interface: Control panel+Software	Drive config: 4 linear rails+Dual Ballscrew
System require: WINXP/WIN7/WIN10 32/64bit	Working environment: 18-25°C, 50% Humidity
Working power: 480W	Electric supply: 110V/220V
Interface: USB2.0/3.0/TCPIP	Gross weight/Net weight: 380KG/320KG
Packing size: 155cm*155cm*98cm	Machine size: 140cm*140cm*90cm

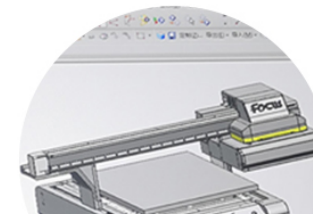
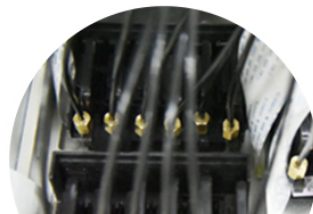
## FOCUS INKJET WITH INNER AND OUTER BEAUTY

A PRINTER COMBINES GOOD APPEARANCE DESIGN WITH INDUSTRIAL CONFIGURATION

01

### CONFIG.ADVANTAGE

Details determine the quality, quality makes the effect





**01**

3 printheads design compatible with DX10,DX11...heads



**02**

Capable of printing varnish ink to add value to your work



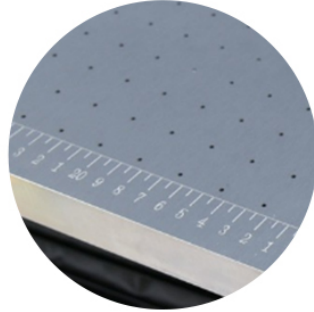
**03**

Own patented design for good-looking appearance



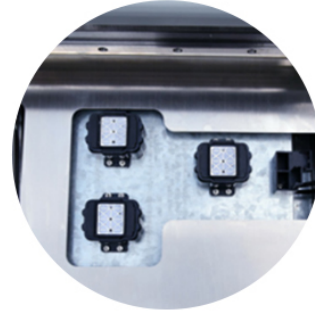
**04**

Own patented design of mainboard and control board



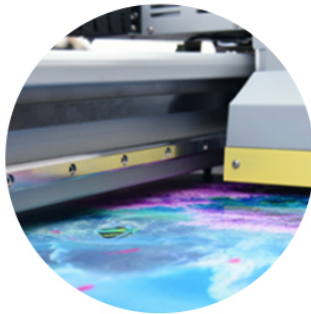
**05**

Super 60\*90cm printing table with laser marking



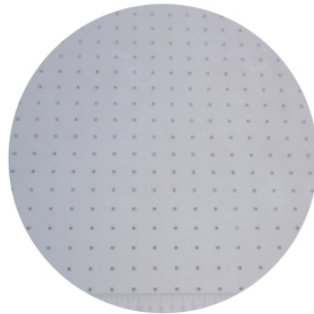
**06**

Auto-flushing and keep wet system to maintain the heads in good condition



**07**

Imported linear rails drive the carriage to move with high precision



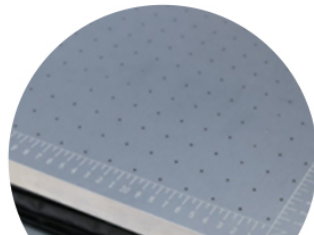
**08**

Teflon coated table with vacuum adsorption function



**09**

External turbine design for best adsorption effect

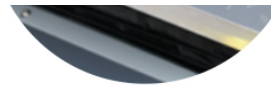






**10**

Dual emergency buttons make printing easier and safer



**11**

Laser engraving on X and Y for easy positioning



**12**

Dust-free carriage cover design for better supervision and eye protection



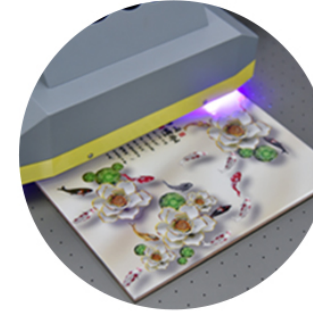
**13**

Rotary device attached allows printing on bottles



**14**

Dual linear rails mounted on both sides for optimal precision



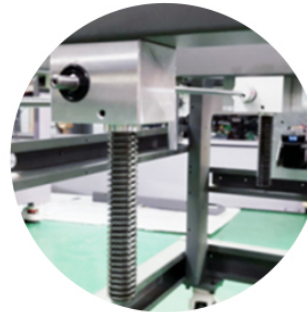
**15**

Dual high-light UV lamps for the best ink curing effect



**16**

Dual ball rails installed on Y for excellent repeating print precision



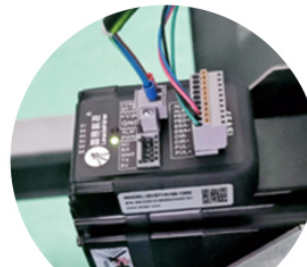
**17**

Ball screw motion ensuring the table up and down vertically and horizontally




**18**

Photosensitive sensors ensuring safe motion






**19**  
Auto media detection  
and anti-scratch system



**20**  
Triple servo motors  
ensuring the best step printing



**21**  
UV curing LED with optical  
lens for optimal curing effect



**22**  
High quality water cooling  
system reducing quickly temperature



**23**  
8 COLOR CMYK+LC+LM+W+  
VARNISH MODEL



**24**  
8pcs auto ink shaking sys. to  
prevent ink settling



**25**  
Dial indicator standard  
test for assembly accuracy



**26**  
Mounted with four  
imported high-mute casters



**27**  
provide different icc color  
profile for different media



28

5MBPS production management to ensure the best assembly quality

29

Full English video and user manual for your first time using

30

Optical fiber data transfer makes print speed quicker

# 02 SOFTWARE ADVANTAGE

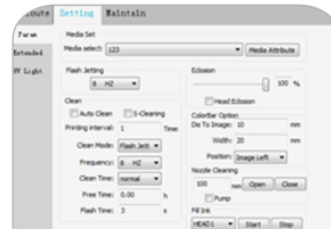
NEW UPDATED FOCUS-V9.07



Special design printing on bottle



Ink limit adjust setting



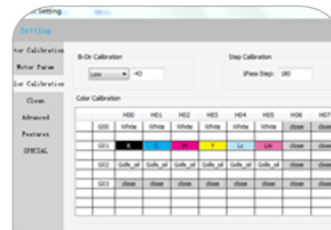
Multi-cleaning function



Eclosion printing



Multi-layer printing



3 Heads 8-color print

Absolute great samples printed

## Application of China Manufactory galaxy ecosolvent printer DX11 digital printing machine

Glass, plastic, metal, leather, acrylic, wood, ceramic, PVC, ABS, stone, cardboard, paper, cylinder bottles, balls, pens, phone cases, id cards, bags, boxes, photo album, oil paintings, slipper etc.



